

NPWirelessx Setup Guide for Mac

Overview

NPWirelessx is aimed at providing a seamless and secure access to the campus wireless network. It supports seamless connection and users do not have to authenticate for network access each time they login to their system

Configurations

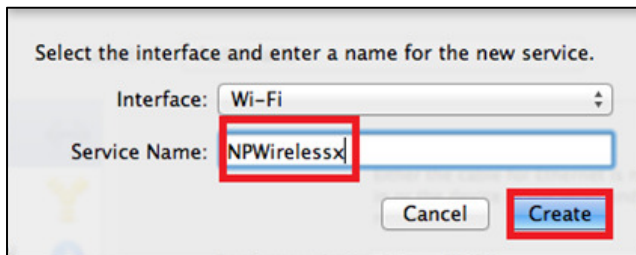
Step 1 Go to **Network**.



Step 2 Click on **+** on the bottom left panel to add new Network



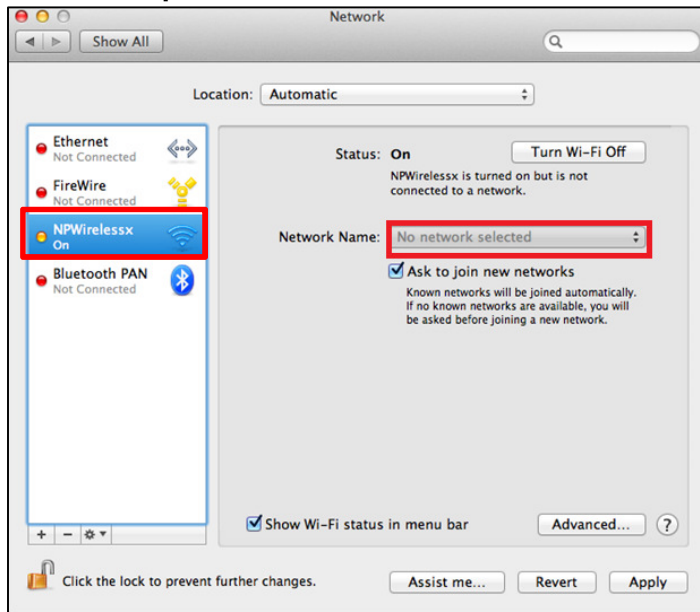
Step 3 Enter the network name as **NPWirelessx** and click **Create**



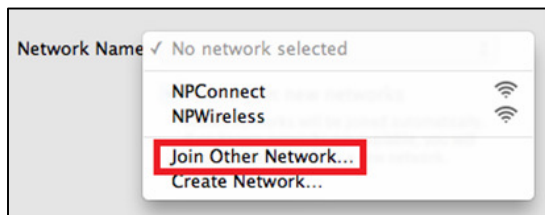
NPWirelessx Setup Guide for Mac

Step 4 Click on **NPWirelessx** Profile.

Click on **dropdown menu** under **Network Name:**



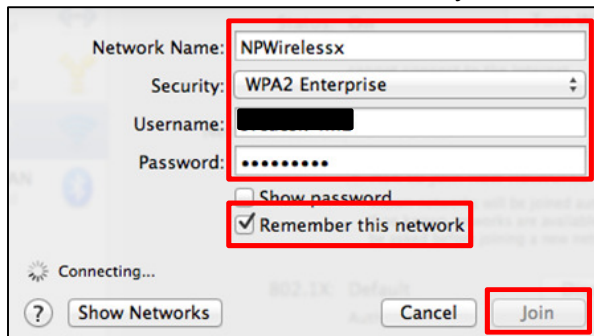
Step 5 Click on **Join Other Network**



Step 6 Enter the following information.

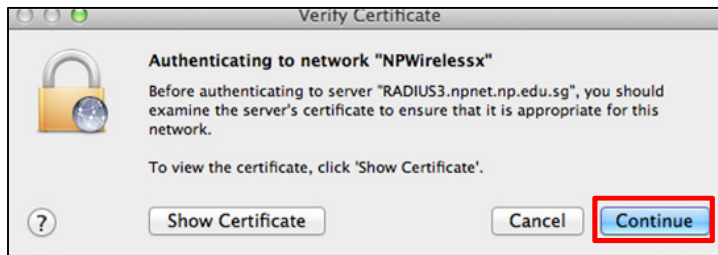
For Username and password, enter your **Staff NPNet ID** or **Student ID** (e.g. s10012345), Password as your **NPNet password** and click **Join**

Note: Do not enter the last letter of your Student ID

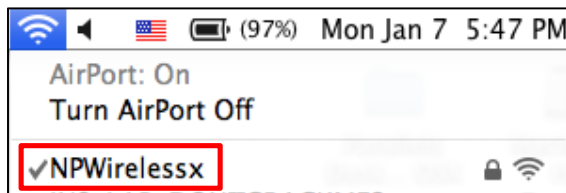


NPWirelessx Setup Guide for Mac

Step 7 Click **Continue**.



Step 8 It will connect to **NPWirelessx**.



If you require assistance with NPWirelessx configuration, you may approach Helpdesk at Blk 27 #01-01 or SMS to 90300263.

Alternatively, please write to:

Students - Dora.ITCare@np.edu.sg with your **Student Number, Full Name, Course of Study** and **Contact Number**

Staff - Support@np.edu.sg

====The End====